

# **Maine Stone - Maine Stone Veneer**

## **Full Stone Veneer Installation Instructions:**

### **Monson Slate - Maine Stone Veneer**

Monson Maine Slate Company's Stone veneer shall vary in bed depth 2 to 6 inches, heights of 2 to 16 inches, or higher where indicated and is furnished in random lengths from 6 inches to 20+ inches or longer where indicated.

### **System Description:**

Non-structural building stone veneer comprised of naturally occurring quarried stone set in a cement mortar with bonding agent or a thin-set mortar like LATICRETE (<http://www.laticrete.com/dealers/products.aspx>). Veneer shall depend on structural support from other structural elements of the building via ties, shelf angles, etc.

### **Building Code Requirements**

Building code requirements vary from area to area. Check with local authorities for building code requirements in your area.

### **Inspection:**

Before commencing, verify that backing structure is plumb and that all bearing surfaces are level.

### **Preparation:**

Clean stone by rinsing with water. A brush may be used to remove excess mud and dirt.

Ties, anchors, lintels, etc. must be cleaned of loose rust, ice or other foreign matter before incorporation into wall.

### **Installation:**

Stone wall shall be erected plumb and true to lines. Lay stone with completely filled mortar joints.

Lay each stone in random order while avoiding any vertical joints by overlapping each joint with the stone above.

Distribute the color range of the stone evenly throughout the work area. Lay out work in advance and distribute color range of stone uniformly over total work area. Maintain an approximate 1/2 inch (12.5 mm) joint as stone allows. If a "dry stack" installation is desired, stone is to be laid tight to one another, as the stone will naturally allow. If required, provide temporary bracing during installation of masonry work. Maintain bracing in place until building structure provides permanent support

### **Anchoring:**

Tie stone to backing with metal ties as indicated. Provide minimum one tie per 2 square feet of wall surface area.

Maximum spacing between adjacent ties shall be 16" vertically and 12" on center horizontally.

Ties should be embedded in horizontal joints 2" minimum.

### **Joining Work:**

Where fresh masonry joins partially set masonry. Remove loose stone and mortar.

Stop off horizontal run of masonry by raking, back 1/2 lengths of stone in each course.

### **Joints:**

Lay stone with 1/2" mortar joint. Tool joints when "thumb print" hard with a round jointer, slightly larger than width of joint

Rake joint and brush smooth with flexible paint brush. Trowel-point exterior joints below grade. Flush cut joints to be finished with a soft brush only. Use non-corrosive stone shims as required to maintain uniform joint thickness

### **Flashing:**

Clean surface of masonry smooth and remove any projections which could damage flashings.

Place flashing on a bed of waterproof silicon. Cover flashing with mortar.

### **Weep Holes:** <http://www.mtidry.com/products/index.php>

Provide additional weep holes in head of joints of first course immediately above flashing

Protect weep holes and area above flashing from mortar droppings.

### **Sealant Recesses:**

Provide open joint, 1/4" deep, and 1/4" to 1/4" wide, where masonry meets doors, windows and other exterior openings.

### **Expansion Joints:**

Keep joints clean and free of debris.

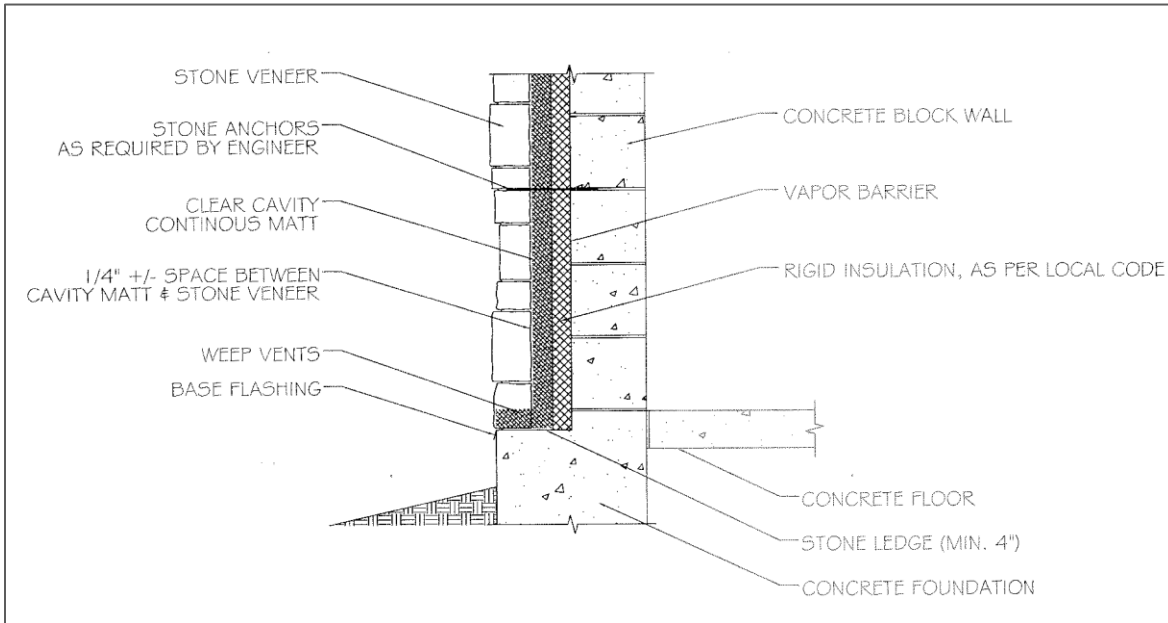
### **Cleaning:**

Cut out and repoint any defective joints. Clean stone with stiff brush and clean water.

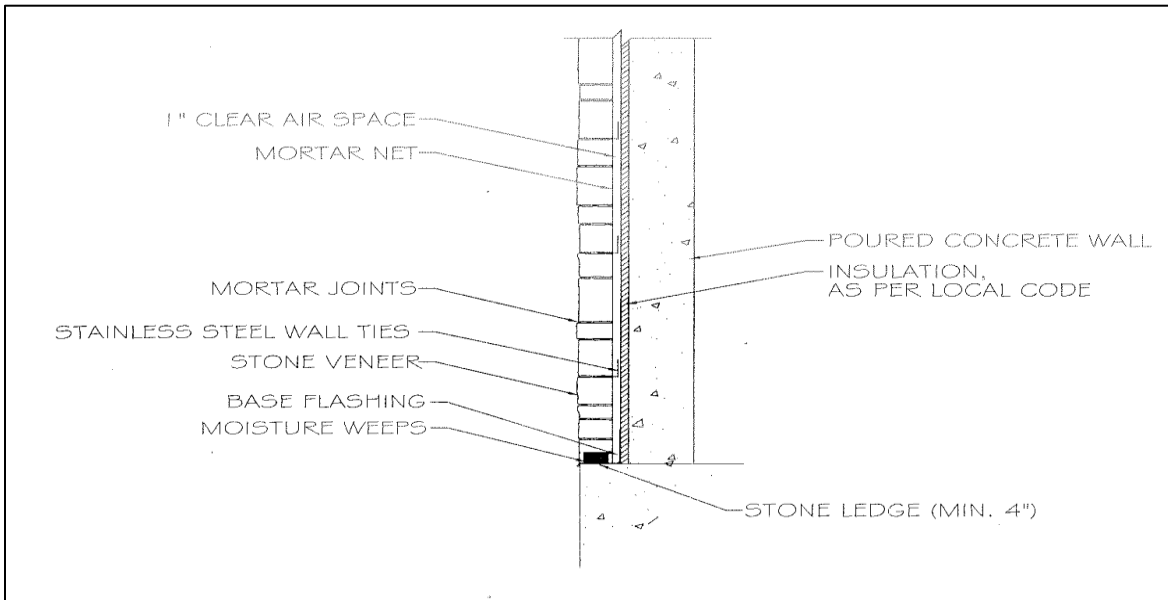
Clean site of mortar droppings and stone chips, etc.

# **Monson Maine Slate Company**

## **Typical Full Stone Veneer Installation Diagrams:**



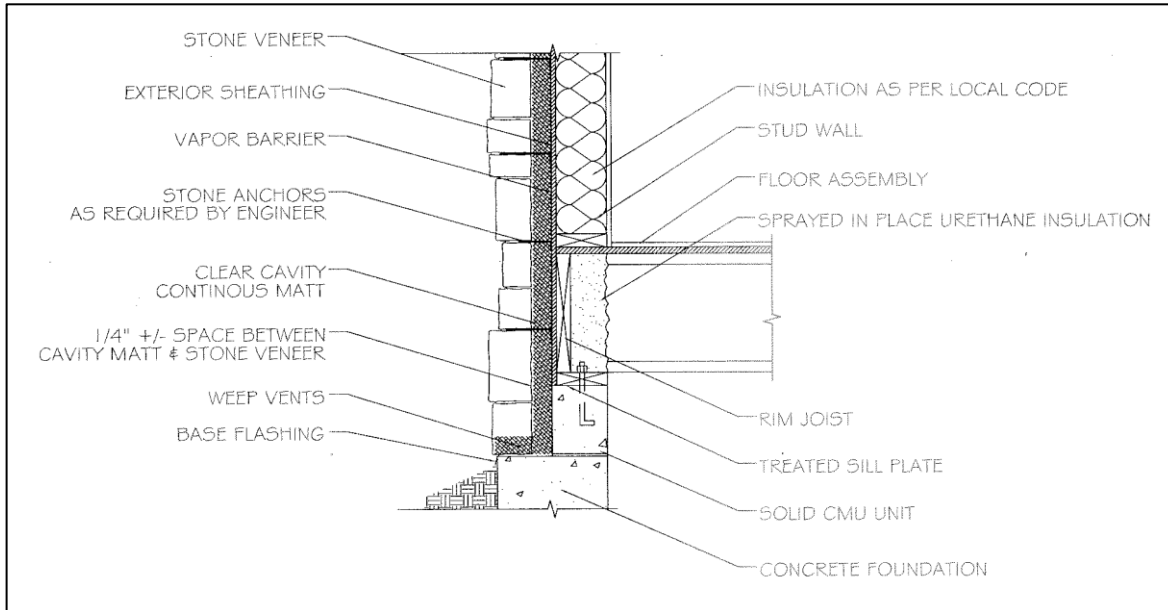
**Typical Installation for Concrete Block Wall**



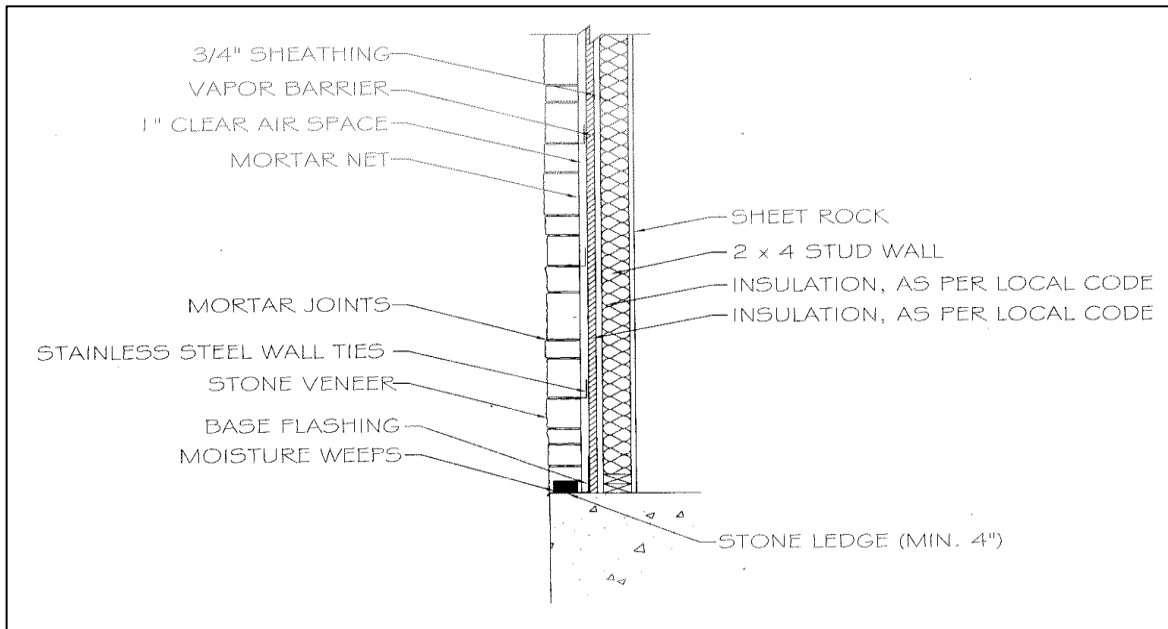
**Typical Installation for Poured Concrete Wall**

# Monson Maine Slate Company

## Typical Full Stone Veneer Installation Diagrams:



**Typical Installation for Stud Built  
Frame 1**



**Typical Installation for Stud Built  
Frame 2**

